



**MEDICALZ®**

CRÉATEUR FRANÇAIS DE VÊTEMENTS COMPRESSIONS DEPUIS 1981

## AESTHETIC & PLASTIC SURGERY

---



[WWW.MEDICALZ.COM](http://WWW.MEDICALZ.COM)

QUALITY  
FOR YOUR  
WELL-BEING



## SUMMARY

INTRODUCING MEDICAL Z® ..... 4

### WOMEN'S GARMENTS:

#### Breast surgery:

Breast and body garments ..... 7

#### Body contouring surgery:

Lipo-panty® ..... 8

Lipo-panty®, Combi suit and Arm Sleeves ..... 10

Combi® and Panty-lift® ..... 11

#### Abdominal surgery:

Post-surgery belt ..... 12

MEN'S GARMENTS ..... 14

ACCESSORIES ..... 15

MEDIGEL Z® AND MEDIPATCH GEL Z® ..... 16

GARMENT SIZING CHART ..... 18

### KEY :

S/ Standard Line  
EC/ Elegance Coolmax® Line

#### LIPO-PANTY®

S/002

Waist Hight

● ○ ●

Product name

Product Reference

Features

Colors available

## NEW DESIGN FOR FAT TRANSFER

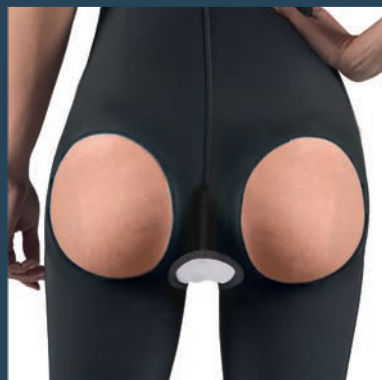
with HOLE or BBLXL

now available on demand

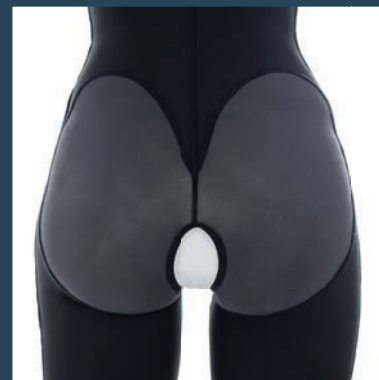
for all Medical Z Lipo Panty and Combi garments



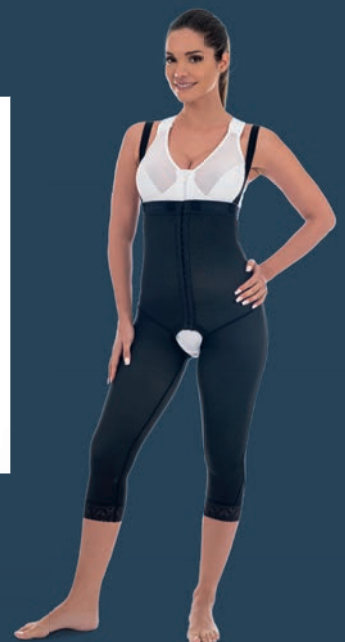
EC/035



HOLE



BBLXL



EC/002

## WHO ARE WE?

For over 40 years, Medical Z® has strived to be at the forefront of technology.

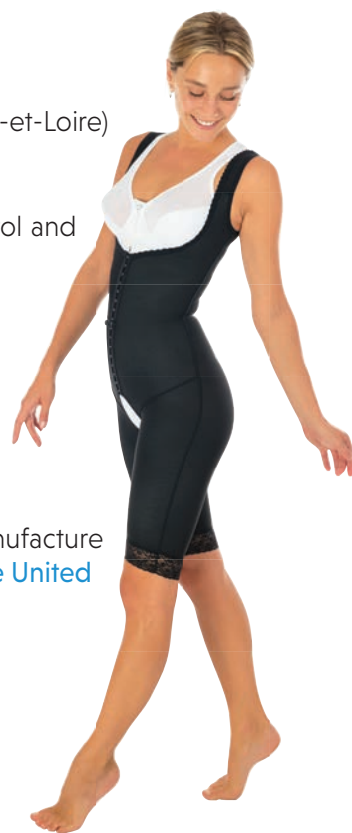
Medical Z® products are **made in France** (in our factory located in Saint-Avertin, Indre-et-Loire) and are made with **high quality** materials (European raw materials).

Thanks to its **integrated R & D** laboratory, Medical Z® has the necessary tools to control and manufacture innovative products and works for a better future **for your patients**.

A requirement that has earned this family business a **worldwide reputation** as a forerunner in **quality and service** in the areas of burns and plastic surgery. Medical Z® offers a wide range of compression orthosis (compression garments, chin straps, sternal strap) **to provide patients with safety, comfort and efficiency throughout the rehabilitation phase**.



Medical Z®, design and manufacture French **products in France and the United States**.



## CLINICAL STUDIES

Our Lipo-panty® garment line is the only one developed following a scientific clinical study\* conducted on 189 patients.

This study enabled us to define optimum compression and determine a system to measure patients before surgery for immediate post-op compression.

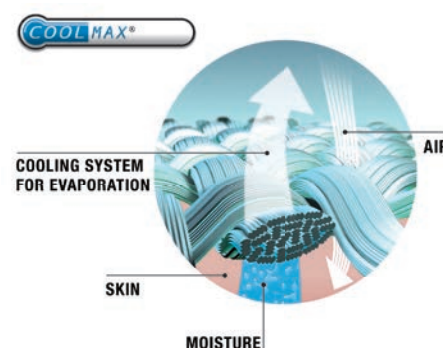
\*Dr Illouz, Pr Greco, Dr Masson, Dr Forli, Clinical Evaluation of Pressure Therapy in conjunction with aesthetic and reconstructive surgery (1989)..

## MEDICAL Z® OFFERS INNOVATIVE AND SCIENTIFICALLY TESTED PRODUCTS

**Our garments respect the anatomy of the patient:**

They allow effective and constant compression even in difficult areas like the crease of the groin. They provide comfort, support and ample freedom of movement.

Our high-tech fabrics consist of a fiber that provides longlasting compression and great thermoregulation. In addition, they have a high solar index: from 40 to 50 SPF.



## QUALITY SERVICE

Our network of orthopedists and pharmacists is at your disposal to provide the best service to your patients.

Manufactures and delivers custom-made compression garments within 8 days.

**infofrance@medicalz.com - Tel. : +33 (0)2 47 71 33 33**

## CONTROL, QUALITY AND RELIABILITY: fabric testing laboratory

To ensure continuous and optimal quality control for its products, Medical Z® products are tested in house. Medical Z® implements tests at the factory prior to delivery, conducts both quality control and research in its own fabric testing laboratory based in Saint Avertin, Touraine, France.

Medical Z® measures and controls the quality of its fabrics daily with state of the art equipment (extensometer, perspirometer, steam equipment, light testing equipment).

These tests include:

- Compression Force Scale
- Color Fastness to water and friction
- Dimensional stability
- Extension
- Tensile strength



5

INTRODUCING MEDICAL Z®

## MEDICAL Z® green environmental policy

In 2010, Medical Z® installed **600m<sup>2</sup> (6500 sq ft)** of photovoltaic panels on the roof of its premises in France. The production generated by solar radiation is now supplying the equivalent of **the energy consumption of Medical Z®**.

The company confirms its environmental commitment by using the **OEKO-TEX® STANDARD 100 Certified materials**.



This eco-label is the first to guarantee the **human-ecological qualities of textiles free from toxic products benefitting the body and the environment**.

The **OEKO-TEX®** system enables the rapid identification and elimination of potential sources of harmful substances for all textile products at all stages of processing.

By manufacturing its textiles with OEKO-TEX® certified raw materials, Medical Z® ensures an efficient and superior product safety.

MEDICAL BRA  
EZ/001



LOW RISE THONG  
EZ/002



BOY SHORT  
EZ/003



FULL BRIEF  
EZ/004



MEDICAL BRA  
POST-MASTECTOMY  
EZ/005

BRA WITH SOFT FABRIC POCKETS  
FOR BREAST PADS\*



\* Not supplied with the product.



ZBRA®  
S/024

Adjustable shoulder with  
mammary strap



MEDICAL ZBRA®  
S/014



ZBRA®  
S/036

Lipofilling adjustable shoulder



ZBRA®  
S/021

Adjustable shoulder strap



BREAST SURGERY

7



SIZING ZBRA®  
S/020



JULIET  
S/012



MAMMOSTAT  
AC/006



MAMMARY STRAP  
S/013





LIPO-PANTY®  
S/001

High, calf



SHORT LIPO-PANTY®  
S/003

High, above knee



LIPO-PANTY®  
S/018

High, ankle



SHORT LIPO-PANTY®  
S/004

Waist height, above knee



LIPO-PANTY®  
S/002

Waist height, calf



LIPO-PANTY®  
S/019

Waist height, ankle



HOLE

OPTIONS NOW AVAILABLE ON DEMAND



BBLXL



LIPO-PANTY®  
EC/002

High, calf  
● ○



LIPO-PANTY®  
EC/004

High, ankle  
● ○



SHORT LIPO-PANTY®  
EC/003

High, above knee  
● ○



SHORT LIPO-PANTY®  
EC/006

Waist height, above knee  
● ○



LIPO-PANTY®  
EC/005

Waist height, ankle  
● ○



LIPO-PANTY®  
EC/001

Waist height, calf  
● ○



HOLE

OPTIONS NOW AVAILABLE ON DEMAND



BBLXL



SHORT LIPO-PANTY®  
EC/034

High back, above knee



LIPO-PANTY®  
EC/035

High back, calf



COMBI-SUIT  
EC/016



OPTIONS

NOW AVAILABLE  
ON DEMAND

(see page 2)



HOLE



BBLXL



HI-DEF FOAM  
S/201

Available for Men and Women



ARM SLEEVES  
EC/042





**PANTY-LIFT®**  
EC/017

Closed crotch  
High, calf  
Outer seams



**COMBI®**  
EC/008

Calf ● ○

**OPTIONS**  
NOW AVAILABLE  
ON DEMAND  
(see page 2)



**HOLE**



**BBLXL**



**PANTY-LIFT®**  
EC/018

Closed crotch  
High  
Outer seams



**COMBI®**  
EC/010

Ankle



**COMBI**  
EC/009

Above knee





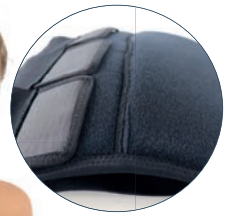
**BELT FULL TORSO**  
S/032

Central closure



**Z-BELT®  
MODEL B**  
S/010

Lateral hook closure



**REINFORCED DIGESTIVE  
BELT**  
S/038

With domed foam plastron

Height :

18 cm - 25 cm - 32 cm



**Z-BELT® HALF TORSO  
FEMALE**  
S/006

Lateral velcro closure  
Foam padding



**Z-BELT® FULL TORSO  
FEMALE**  
S/008

Lateral hook closure or velcro  
closure  
Foam padding



**Z-BELT®  
MODEL A**  
S/009

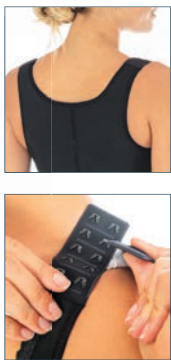
Lateral hook closure



**ABDOMINAL BINDER  
FEMALE**  
S/022

Height :  
18 cm - 25 cm - 32 cm





BELT  
EC/033

Central closure  
High back



BELT HALF TORSO  
EC/032

Central closure



BELT FULL TORSO  
EC/012

Lateral hook closure



BELT HALF TORSO  
EC/014

Lateral hook closure



BELT HALF TORSO  
EC/011



BODY  
EC/007





COMBIN FOR MEN  
EC/043

High back, calf  
zip closure



COMBI  
EC/037



ROMEO  
EC/038



BELT FULL TORSO  
EC/036

Central closure



HI-DEF FOAM  
S/201

Available for Men and Women



ABDOMINAL BINDER  
S/015

Lateral velcro closure



Z-BELT® HALF TORSO  
MALE  
S/005

Lateral velcro closure  
Foam padding



Z-BELT® FULL TORSO  
MALE  
S/007

Lateral hook closure or velcro closure  
Foam padding



HOLE

OPTIONS NOW AVAILABLE ON DEMAND

[WWW.MEDICALZ.COM](http://WWW.MEDICALZ.COM)



BBLXL

ABDOMINALS BINDERS AND CHEST



ABDOMINAL BINDER  
MEN  
S/022

Height : 18 cm - 25 cm - 32 cm  
● ○



REINFORCED DIGESTIVE  
BELT  
S/038

With domed foam plastron  
Height : 18 cm - 25 cm - 32 cm  
●



THORACIC BELT  
S/033

Height : 25 cm  
● ○

OTHER GARMENTS



OTHER BELTS & ACCESSORIES



VAN DE VEN  
FACEMASK  
AC/012

One size



VAN DE VEN  
COOLING FACEMASK  
AC/013

Slot for gel bag  
(not supplied  
with the product)  
One size



EAR BAND  
AC/003

Size for baby, children  
and adult.  
With or without foam



EAR BAND  
AC/016

Velcro closure  
One size



PRESSLIFT  
AC/002



STERNAL STRAP  
AC/001



KNEE SUPPORT  
AC/004



ANKLE SUPPORT  
AC/005



SLEEVE  
EC/044



# MEDIGEL Z<sup>®</sup> TECHNOLOGY

Medical Z<sup>®</sup> has developed a line of products that are known for their effectiveness, durability, ease in application, comfort and value.

Various studies have shown the effectiveness of polymers to prevent the formation of hypertrophic and keloid scars.

Medigel Z<sup>®</sup> is a combination of a triblock copolymer and an H1 Class mineral oil.

Originally devised for the treatment of scars for burn victims, Medigel Z<sup>®</sup> now has a wider range of products for surgeries that includes plastic surgery, aesthetics, orthopedics and podiatry.

16

MEDIGELZ<sup>®</sup> AND MEDIPATCH GELZ<sup>®</sup>

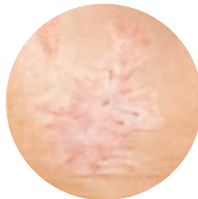
BEFORE TREATMENT



AFTER 3 MONTHS



AFTER 6 MONTHS



FINGER SLEEVES  
MEDIGEL Z<sup>®</sup>



ELASTIC SLEEVES  
MEDIGEL Z<sup>®</sup>



GLOVE LINED  
WITH GEL Z<sup>®</sup>



CLEAR SHEET  
MEDIGEL Z<sup>®</sup>

# MEDIPATCH GEL Z<sup>®</sup> TECHNOLOGY

Medipatch Gel Z<sup>®</sup> has been constructed from the same technology as the Medigel Z<sup>®</sup>, offers the advantage of self adhering to various body surfaces and has been proven superb in repetitive usage without losing its adhesive properties.

Medipatch Gel Z<sup>®</sup> is available as transparent or lined with fabric. It is available in various shapes and sizes to accommodate various anatomic surfaces.



MAMMOPATCH  
GEL Z<sup>®</sup>



ABDOPATCH  
GEL Z<sup>®</sup>



MEDIPATCH  
GEL Z<sup>®</sup> PADS  
5 X 8 CM

## MEDIGEL Z® & MEDIPATCH GEL Z®

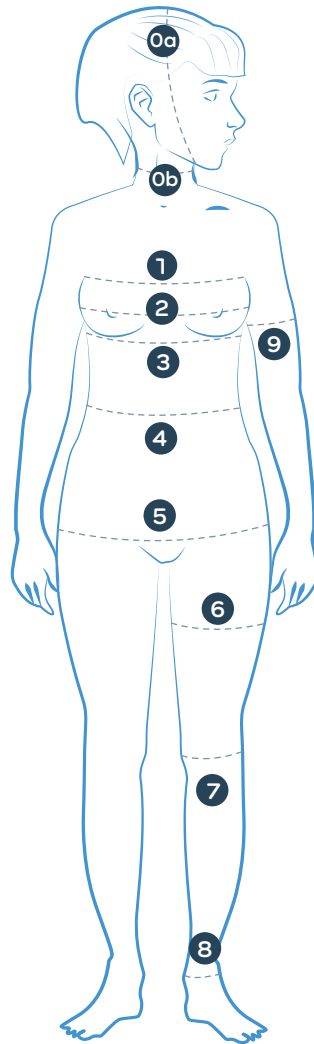
MEDIGEL Z®	MEDIPATCH GEL Z®	MEDIPATCH GEL Z® THIN
<b>FINGER TUBE Z fabric lined</b> opened or closed T1, T2, T3 or T4 (4 pcs)	<b>MEDIPATCH GEL Z SHEET fabric lined</b> in cm : 5x8 (4 pcs), 10x15, 20x20, 30x40 or 40x50	<b>MEDIPATCH THIN GEL Z SHEET fabric lined</b> in cm : 5x8 (4 pcs), 10x15, 20x20, 30x40 or 40x50
<b>FINGER TUBE Z clear lined</b> opened or closed T1, T2, T3 or T4 (4 pcs)		
<b>MEDIGEL Z SHEET fabric lined</b> in cm : 10x10 (2 pcs), 20x20, 30x40 or 40x50	<b>MEDIPATCH GEL Z SHEET clear sheet</b> in cm : 10x15	<b>MEDIPATCH THIN GEL Z SHEET clear sheet</b> in cm : 5x8 (6 pcs), 10x15 or 20x20
<b>MEDIGEL Z SHEET clear sheet</b> in cm : 10x10 (2 pcs)		
<b>ELASTIC SLEEVE MEDIGEL Z</b> T1, T2, T3, T4 or T5	<b>PADS MEDIPATCH GEL Z</b> with or without hole (4 pcs)	<b>PADS MEDIPATCH THIN GEL Z fabric lined</b> with or without hole (4 pcs)
<b>CHIN STRAP GEL Z</b> adult or child	<b>MAMMOPATCH GEL Z</b> left and right	<b>MAMMOPATCH THIN GEL Z</b> left and right
<b>GLOVE GEL Z</b> T1, T2 or T3	<b>MAMMOPATCH GEL Z</b> vertical (2 pcs)	<b>MAMMOPATCH THIN GEL Z</b> vertical (2 pcs)
<b>STERNAL STRAP GEL</b> male or female	<b>ABDOPATCH GEL Z</b>	<b>ABDOPATCH THIN GEL Z</b>
<b>FINGER CAP</b> T1, T2, T3 or T4 (10 pcs)	<b>CESARPATCH GEL Z</b>	<b>CESARPATCH THIN GEL Z</b>

\*2 options for orders: 4 digi-tub of the same size OR 2 different sizes per pack.  
Thickness of Z-gel 4mm and thin Z-gel approx. 1 mm.

- Soft and comfortable
- Protects scar site against chafing
- Can be used in conjunction with compression garments
- Expands and conforms to patient movements
- Available with fabric lining
- Can be cut to desired size
- Hypoallergenic
- Economical: lasts 3 to 6 times longer than silicone sheets i.e. 8-12 weeks with proper care



# MAIN SIZES



**HEAD** 0a  
Under the chin to the top of the head

**NECK** 0b  
Middle of the neck

**THORAX CIRCUMFERENCE** 1  
At axilla level

**CHEST CIRCUMFERENCE** 2  
Fullest part of the nipple level

**UNDER BREAST** 3

**WAIST CIRCUMFERENCE** 4  
Smallest part of natural waist

**5 HIP CIRCUMFERENCE**  
Fullest part of hip area

**6 THIGH CIRCUMFERENCE**  
Fullest part

**7 BICEPS CIRCUMFERENCE**  
Fullest part

**8 ANKLE**

**9 BICEPS CIRCUMFERENCE**  
Fullest part

## NOTES:

- For **Zbra®** the sizing chart match to the size **AFTER OPERATION**.
- For the other products, sizing charts match to the size **BEFORE OPERATION**.
- OTHER SIZES CAN BE MADE TO MEASURE.

## CHART

### ZBRA®

S/014, S/021, S/024, S/036 (available from 80 to 100 B.C.D), EZ/001 (available from 85 to 110 B.C.D.E), EZ/005 (available from 85 to 110 A.B.C.D.E)

FRENCH SIZES	80	85	90	95	100	105	110	115
EUROPEAN SIZES	65	70	75	80	85	90	95	100
US SIZES	30	32	34	36	38	40	42	44
AUSTRALIAN SIZES	8	10	12	14	16	18	20	22
UNDER BREAST CIRC. (cm) ③	68 - 72	73 - 77	78 - 82	83 - 87	88 - 92	93 - 97	98 - 102	103 - 107
CHEST CIRCUMFERENCE (cm) ②								
CUP A	77 - 79	82 - 84	87 - 89	92 - 94	97 - 99	102 - 104	107 - 109	112 - 114
CUP B	79 - 81	84 - 86	89 - 91	94 - 96	99 - 101	104 - 106	109 - 111	114 - 116
CUP C	81 - 83	86 - 88	91 - 93	96 - 98	101 - 103	106 - 108	111 - 113	116 - 118
CUP D	83 - 85	88 - 90	93 - 95	98 - 100	103 - 105	108 - 110	113 - 115	118 - 120
CUP E	85 - 87	90 - 92	95 - 97	100 - 102	105 - 107	110 - 112	115 - 117	120 - 122



### MOUSSE DE COMPRESSION SUPPLÉMENTAIRE

S/201

	MEN	WOMAN
SIZES	UNDER BREAST ③ (cm)	UNDER BREAST ③ (cm)
XS		76
S	86	81
M	92	86
L	97	92
XL	102	

### JULIET

S/012

SIZES	UNDER BREAST (cm) ③
00	75 - 80
0	80 - 85
1	85 - 90
2	90 - 95
3	95 - 100
4	100 - 105
5	105 - 110

### MAMMARY STRAP

S/013

SIZES	THORAX (cm) ①
00	75 - 80
0	80 - 85
1	85 - 90
2	90 - 95
3	95 - 100
4	100 - 105
5	105 - 110
6	110 - 115



### LIPO-PANTY, COMBI & COMBI SUIT\*

S/001, S/002, S/003, S/004, S/018, S/019,  
EC/001, EC/002, EC/003, EC/004, EC/005, EC/006, EC/008,  
EC/009, EC/010, EC/016, EC/017, EC/018, EC/034, EC/035

Only  
EC/016

SIZES	UNDER BREAST (cm) ③	WAIST CIRC. (cm) ④	HIP CIRC. (cm) ⑤	THIGH (cm) ⑥	BICEPT CIRC. (cm) ⑨
1	71 - 75	63 - 67	83 - 88	44 - 49	25 - 29
2	76 - 80	68 - 72	89 - 93	50 - 55	29 - 33
3	81 - 85	73 - 77	94 - 99	55 - 59	33 - 37
4	86 - 90	78 - 82	100 - 105	59 - 62	37 - 41
4+	91 - 95	83 - 87	106 - 112	63 - 67	41 - 45
5	96 - 100	88 - 92	113 - 119	68 - 72	45 - 49
6	101 - 108	93 - 100	120 - 130	73 - 77	49 - 53
7	109 - 113	101 - 108	131 - 141	78 - 82	53 - 57



### BODY & BELT ELEGANCE COOLMAX®

S/009, S/010, S/032  
EC/007, EC/011, EC/012, EC/014, EC/032, EC/033

SIZES	UNDER BREAST (cm) ③	WAIST CIRC. (cm) ④	HIP CIRC. (cm) ⑤
1	70 - 75	67 - 72	83 - 88
2	76 - 81	73 - 78	89 - 93
3	82 - 87	79 - 84	94 - 99
4	88 - 93	85 - 90	100 - 105
4+	94 - 99	91 - 96	106 - 112
5	100 - 105	97 - 102	113 - 119
6	106 - 115	103 - 112	120 - 130
7	116 - 121	113 - 118	131 - 141

\* Lipo-panty® and combi : measures taken for patients between 1m60 and 1m75.

### BELT Z® STANDARD

S/005, S/006 uniquement Taille et Bassin  
S/007, S/008

SIZES	UNDER BREAST (cm) ③	WAIST CIRC. (cm) ④	HIP CIRC. (cm) ⑤
1	65 - 79	63 - 77	80 - 95
2	80 - 94	78 - 92	96 - 110
3	95 - 116	93 - 114	111 - 130
4	117 - 131	115 - 129	131 - 140
5	132 - 136	130 - 144	141 - 150
6	137 - 151	145 - 151	151 - 160
7	152 - 166	152 - 158	161 - 170

### ABDOMINAL BINDER FOR MEN AND COMBI

S/015, EC/036, uniquement Taille et Bassin  
EC/037, EC/043

SIZES	UNDER BREAST (cm) ③	WAIST CIRC. (cm) ④	HIP CIRC. (cm) ⑤	THIGH (cm) ⑥
1	95 - 100	78 - 85	85 - 95	51 - 53
2	101 - 105	86 - 93	96 - 101	54 - 56
3	106 - 110	94 - 101	102 - 107	57 - 59
4	111 - 115	102 - 109	108 - 113	60 - 63
5	116 - 120	110 - 117	114 - 118	64 - 66
6	121 - 125	118 - 125	119 - 125	67 - 70
7	126 - 130	126 - 130	126 - 130	71 - 73

### ROMEO

EC/038

SIZES	UNDER BREAST (cm) ③
00	75 - 90
0	90 - 95
1	95 - 100
2	100 - 105
3	105 - 110
4	110 - 115
5	115 - 120
6	120 - 125

### DIGESTIVES BELT & THORACICS

S/022 - S/033 - S/038

AVAILABLE HEIGHTS :  
18 cm (Model A) - 25 cm (Model B) - 32 cm (Model C)

SIZES (cm)	70	80	90	100	110	120	130	140	150
Waist circ. (S/022 & S/038 only) ④	65 - 75	75 - 85	85 - 95	95 - 105	105 - 115	115 - 125	125 - 135	135 - 145	145 - 155
Thorax circ. (S/033 only) ①									

### EAR BAND

AC/003

SIZES	INFANT	CHILD	ADULT
AGES	up to 3 years	3 to 15 years	15 years and more

### KNEE SUPPORT

AC/004

SIZES	1	2	3	4	5
KNEE (cm) ⑦	33	35	37	41	46

### ANKLE SUPPORT

AC/005

SIZES	1	2	3	4	5
ANKLE CIRC. (cm) ⑧	17,5	19	20,5	23	25

### PRESS-LIFT

AC/002

SIZES	NECK CIRC. (cm) ⑩b	HEAD CIRC. (cm) ⑩a
Infant	22 - 25	41 - 48
Toddler	26 - 29	49 - 55
Adult 1	30 - 35	56 - 63
Adult 2	36 - 41	64 - 68
Adult 3	42 - 47	69 - 72

### ARM SLEEVES

EC/042

EC/044, only biceps circumference ⑨

SIZES	UNDER BREAST (cm) ③	BICEPS CIRC. (cm) ⑨
0	65 - 70	21 - 25
1	70 - 80	25 - 29
2	80 - 90	29 - 33
3	90 - 95	33 - 37
4	95 - 100	37 - 41
5	100 - 110	41 - 45
6	110 - 117	45 - 49





QUALITY FOR YOUR WELL-BEING

---

FRANCE

ZI N°1 - 14, rue Georges Cuvier - 37550 SAINT-AVERTIN

Tél. : +33 (0)2 47 71 33 33 - Fax. : +33 (0)2 47 71 33 34

Email : [infofrance@medicalz.com](mailto:infofrance@medicalz.com)

